

Denbighshire Falls Prevention Service

Jane Boyd

Denbighshire Falls
Prevention Co-ordinator

Aims

- Goals set
- NW Service Models
- Identification
- Pathway development
- Future development



Falls Co-ordinator post

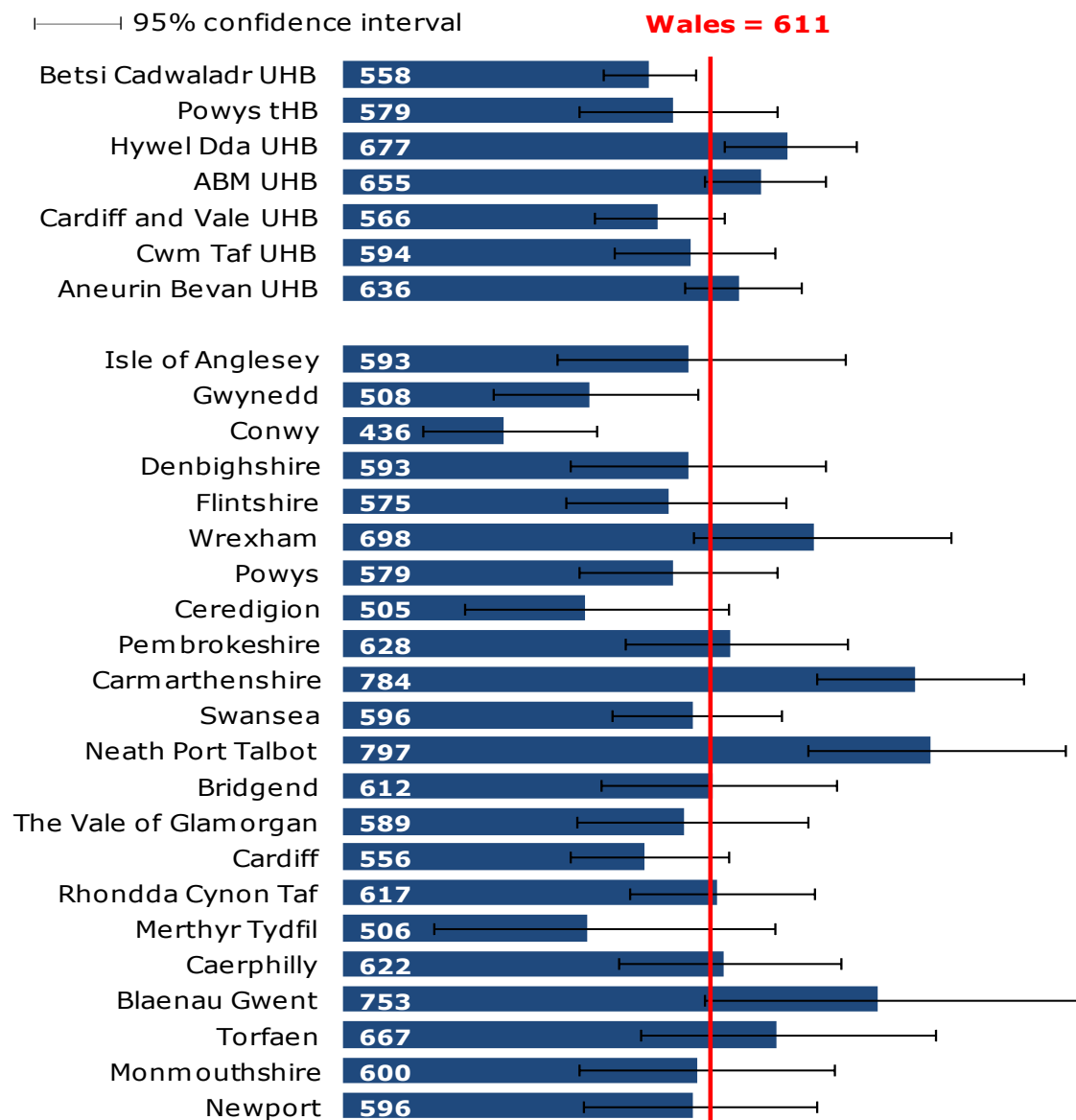
- Anglesey Falls Prevention Service
- Background in Sport and Exercise Science
- ICF funded (End of September 2015)
- Cost neutral service

Overall Long Term Goals

- A reduction in overall hospital admissions for older people
- A reduction in emergency hospital admissions for older people
- A reduction in Neck of Femur fractures

Emergency hospital admissions with a primary diagnosis of hip fracture, European age-standardised rate (EASR) per 100,000, persons aged 65 and over, Wales, health boards & local authorities, 2013/14

Produced by Public Health Wales Observatory using PEDW (NWIS) & MYE (ONS)



Short/ Mid term goals (March 2015)

- Development of Falls Pathway
 - Evidence based
 - NICE guidelines
 - BCUHB service models (launched June 2013)
 - North Wales MRAs (launched October 2014)
 - Prudent Healthcare
- Falls Register
- Identification - 'everybody's business'
- Efficient referral pathway of existing services
- Exercise intervention development

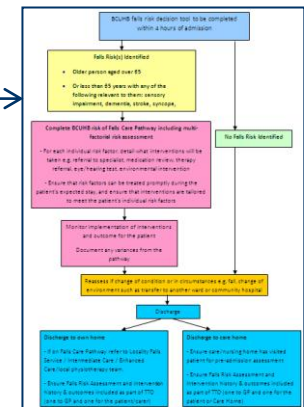
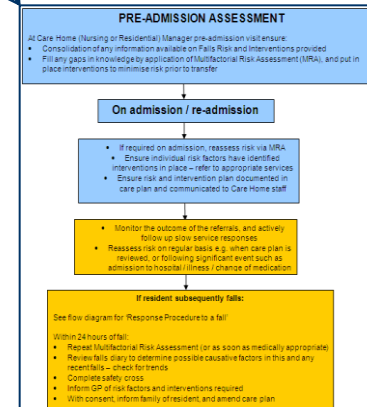
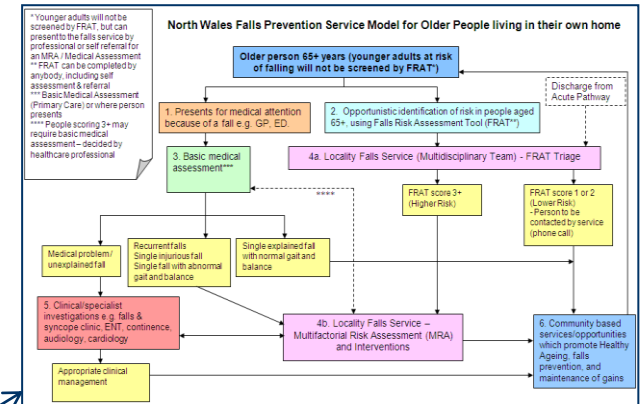
Falls: assessment and prevention of falls in older people

Issued: June 2013

NICE clinical guideline 161
guidance.nice.org.uk/cg161

NICE has accredited the process used by the Centre for Clinical Practice at NICE to produce guidelines. Accreditation is valid for 5 years from September 2009 and applies to guidelines produced since April 2007 using the processes described in NICE's 'The guidelines manual' (2007, updated 2009). More information on accreditation can be viewed at www.nice.org.uk/accreditation

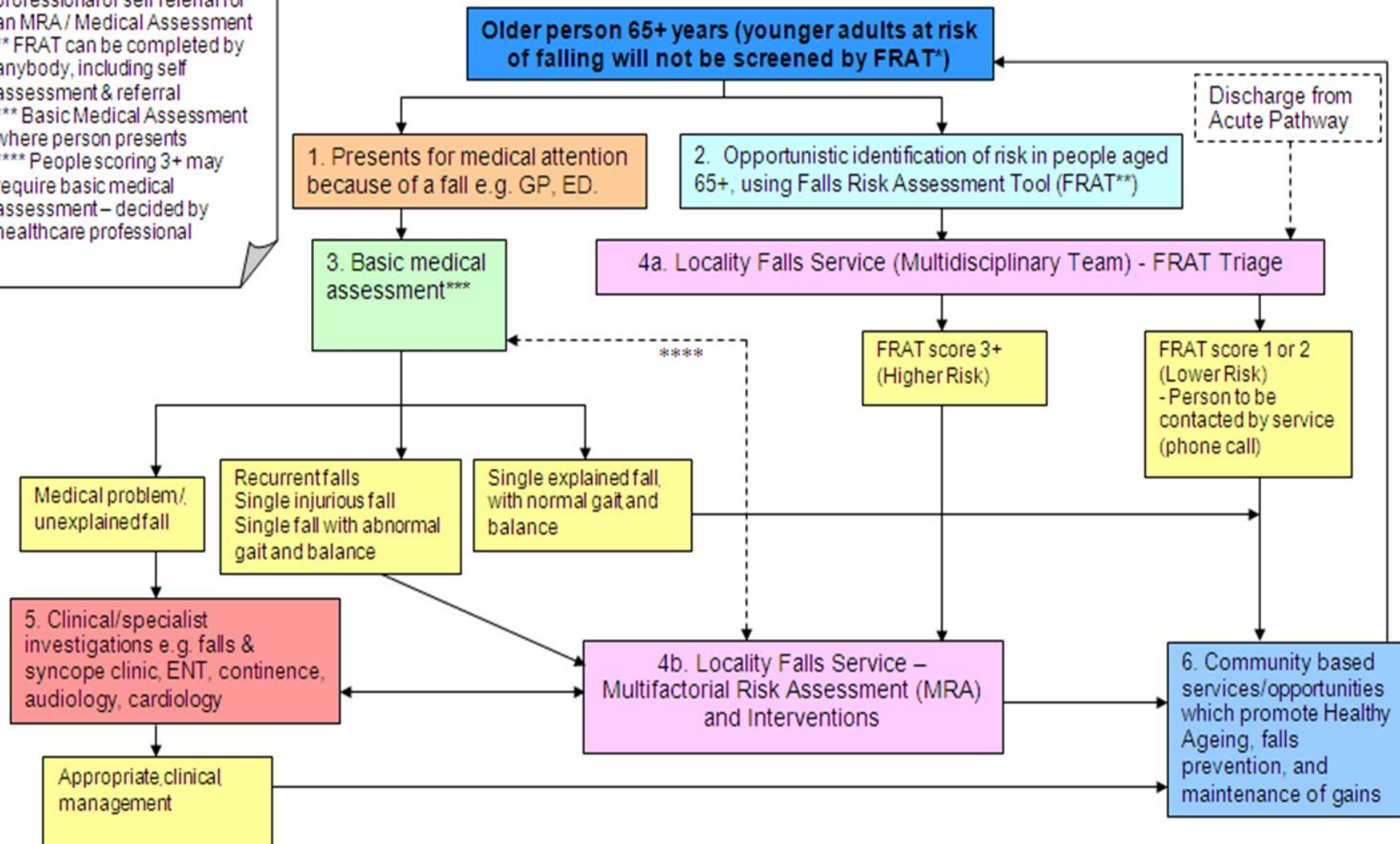
© NICE 2013



North Wales Project: From Guidance to Action – A pragmatic evidence based approach

* Younger adults will not be screened by FRAT, but can present to the falls service by professional or self referral for an MRA / Medical Assessment
 ** FRAT can be completed by anybody, including self assessment & referral
 *** Basic Medical Assessment where person presents
 **** People scoring 3+ may require basic medical assessment – decided by healthcare professional

Draft Falls Pathway for Older People living in their own home in North Wales



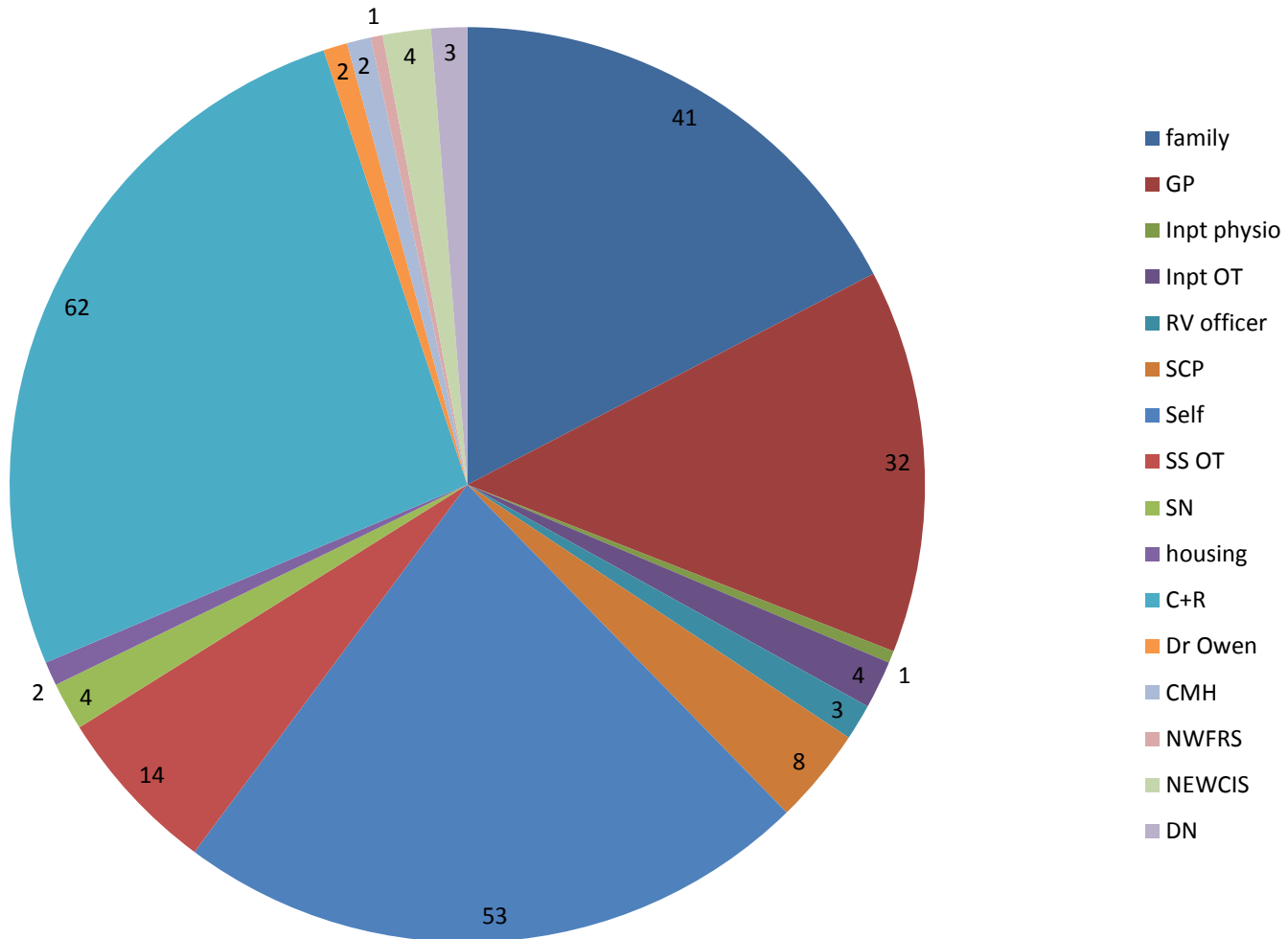
Output – Awareness/ Identification

- Implementation of the Falls Risk Assessment Tool (FRAT) (Nandy et al., 2005) in SPOA
- Implementation of the FRAT leaflet/ referral tool to increase awareness in the community.
- Development of Falls Prevention Process from SPOA to appropriate referral and the 'loop back' to the SPOA.
- WAST pathway and database to track the progress of patients that have had a fall, required Ambulance intervention but were not transferred to hospital.

Output – Awareness/ Identification continued

- Falls Register has been developed within SPOA to collate information of fallers in Denbighshire.
- Education and awareness for Social Care Staff, Health Care Staff, Leisure staff and 3rd Sector volunteers, statutory services
- Education and awareness of external staff and the general public.
- Falls Prevention information the Denbighshire County Council Website, on what is available and how to access the Service.

Profession rates of FRAT into SPOA



Monthly WAST referral Denbighshire

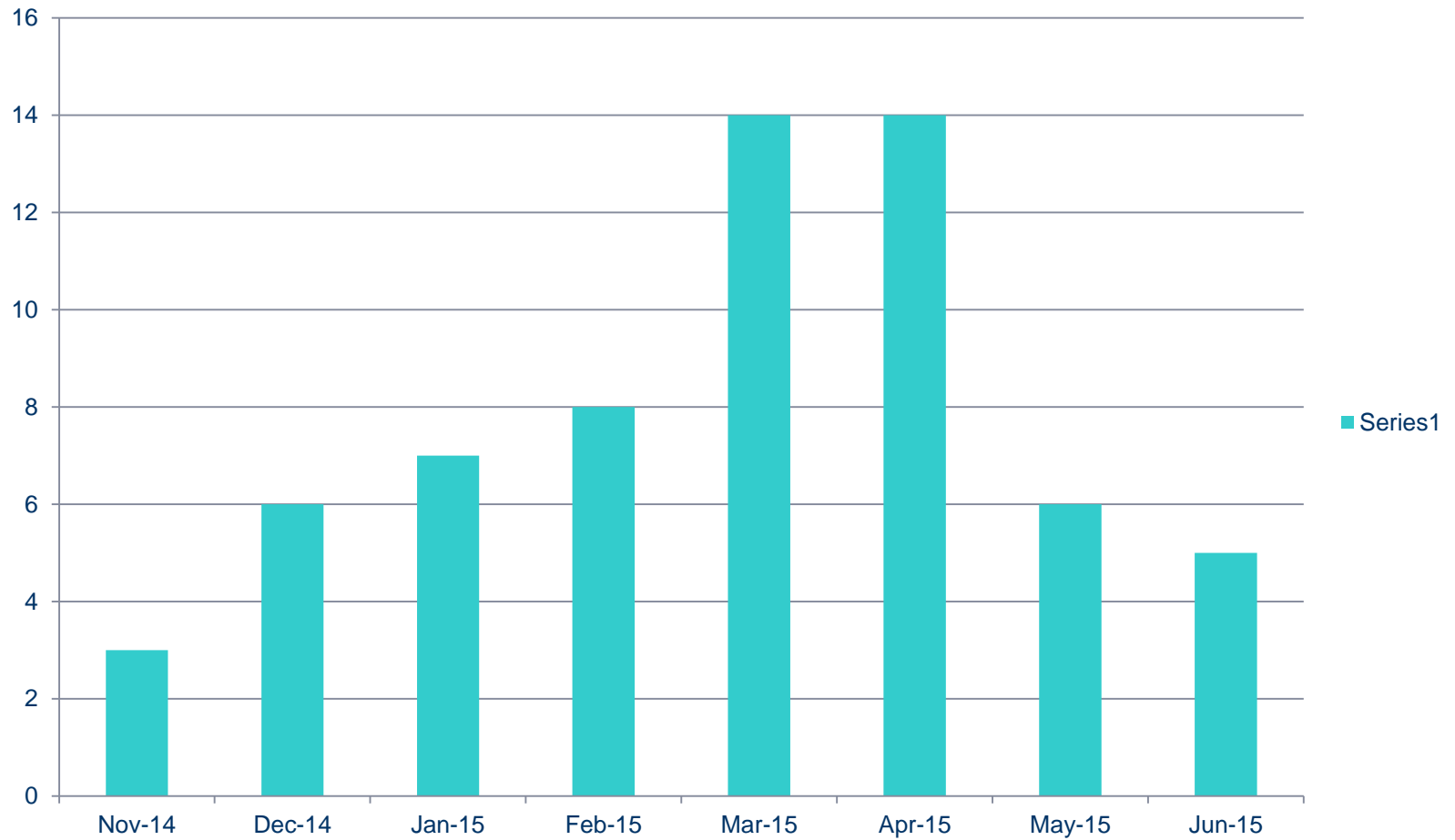
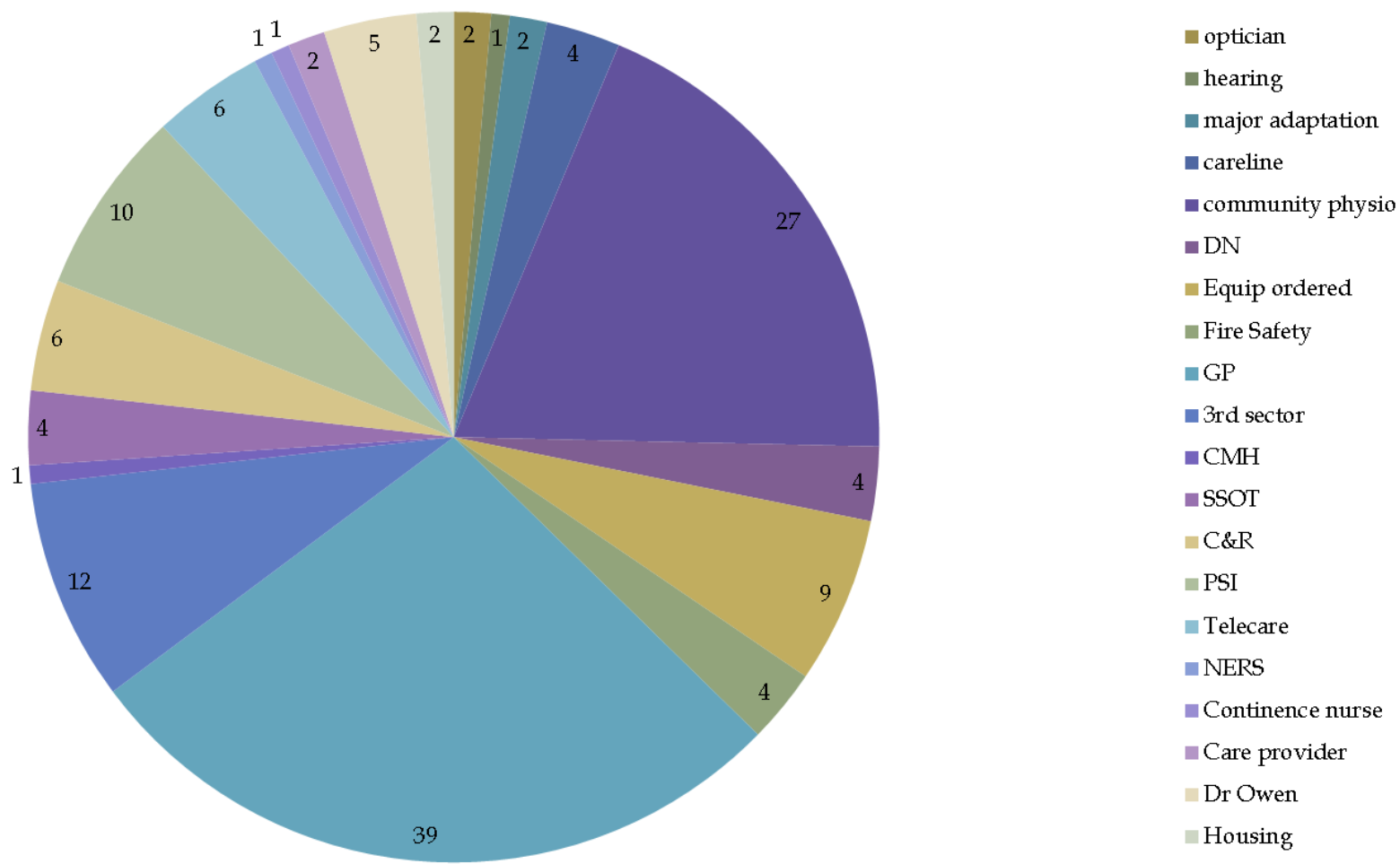


Chart Showing Referrals Made on MRA completion.



Output – Pathway Development

- Development of the **Care Home** MRA implementation in Care Home
- **Postural stability Instructor (PSI)** course implemented in North Wales
- Increase in PSI class provision
- Collaboration with the 'Moving and Handling' Group
- Liaising with other services

Future progression

- Continued increase in number of FRAT referrals



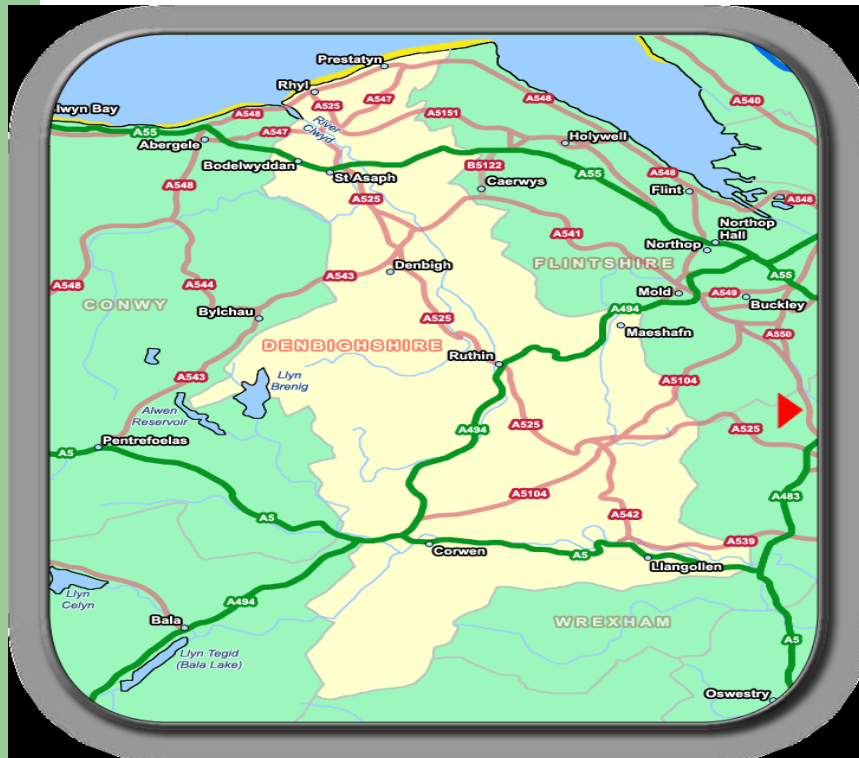
- Continued increase in number of MRA completed



- Continued increase in number of **appropriate** referrals made to other services

Future Progression

- Number of **PSI classes** to be increased and developed



- 'Follow on' / **exit route** strategy
- Improved co-ordination from **Acute pathway** to Community pathway.
- Improved **Database** for North Wales

Thank you!

Any Questions?