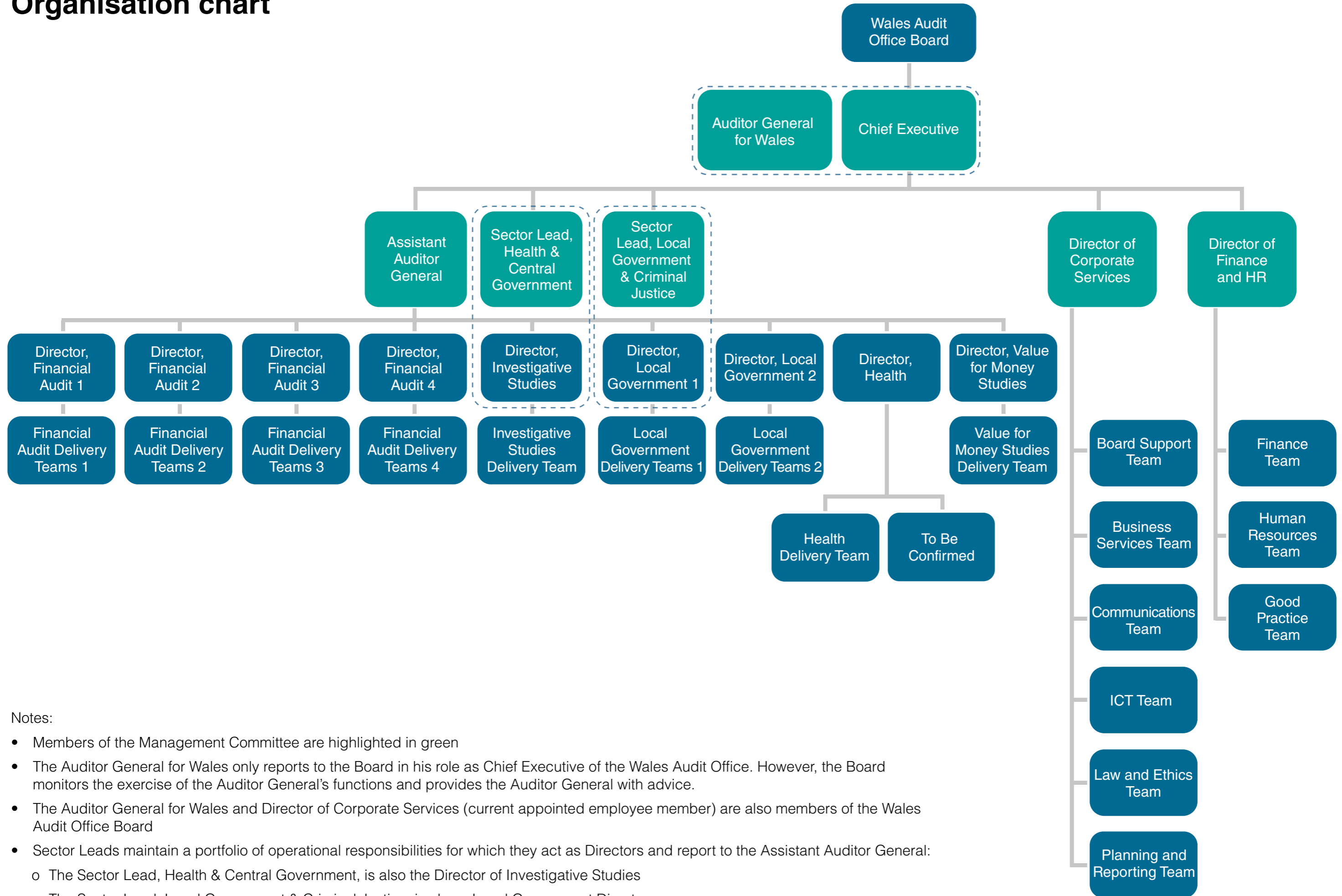


Organisation chart



Notes:

- Members of the Management Committee are highlighted in green
- The Auditor General for Wales only reports to the Board in his role as Chief Executive of the Wales Audit Office. However, the Board monitors the exercise of the Auditor General's functions and provides the Auditor General with advice.
- The Auditor General for Wales and Director of Corporate Services (current appointed employee member) are also members of the Wales Audit Office Board
- Sector Leads maintain a portfolio of operational responsibilities for which they act as Directors and report to the Assistant Auditor General:
 - o The Sector Lead, Health & Central Government, is also the Director of Investigative Studies
 - o The Sector Lead, Local Government & Criminal Justice, is also a Local Government Director
- The Management Committee and other Directors meet on a regular basis as a broader Senior Leadership Team